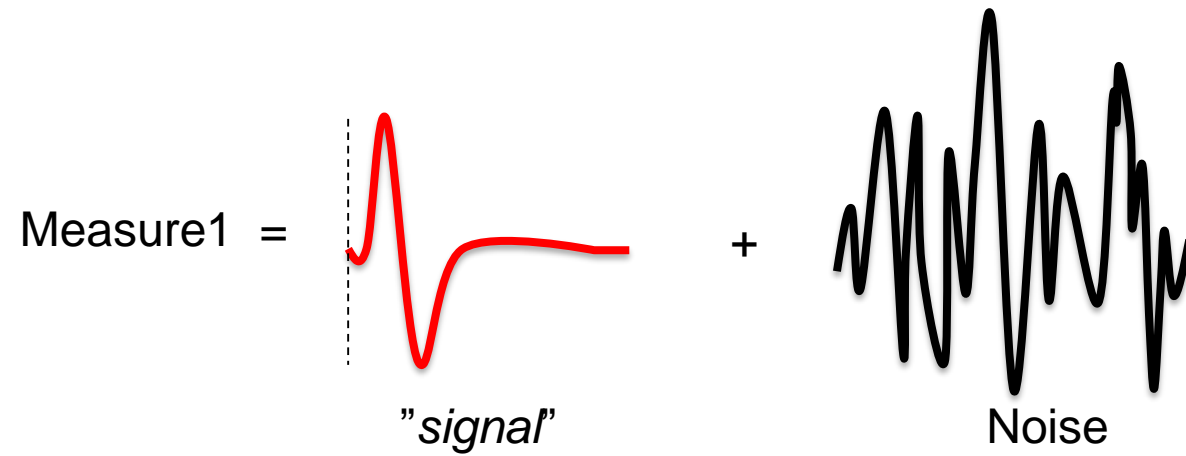




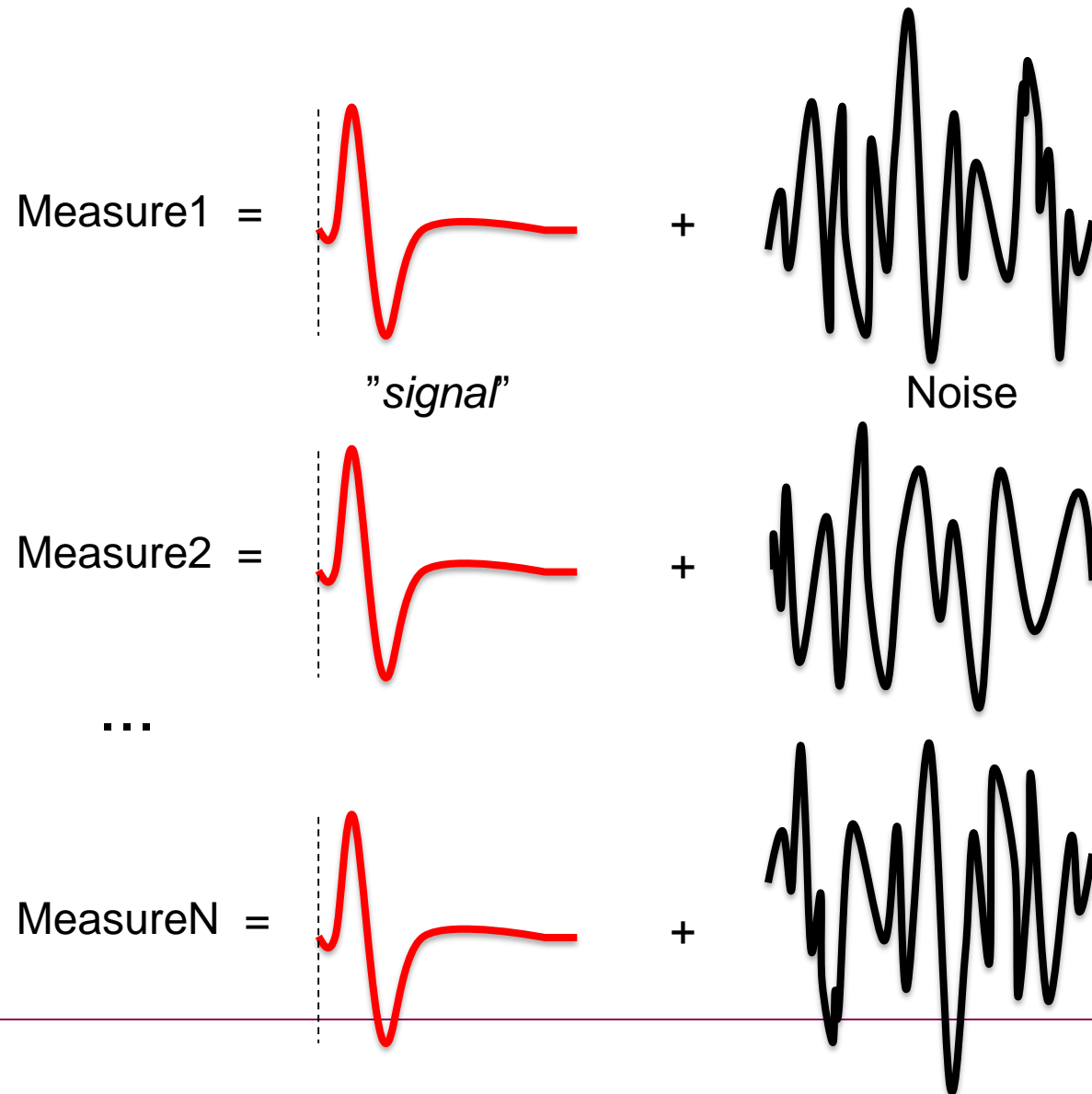
**Karolinska
Institutet**

Evoked analysis

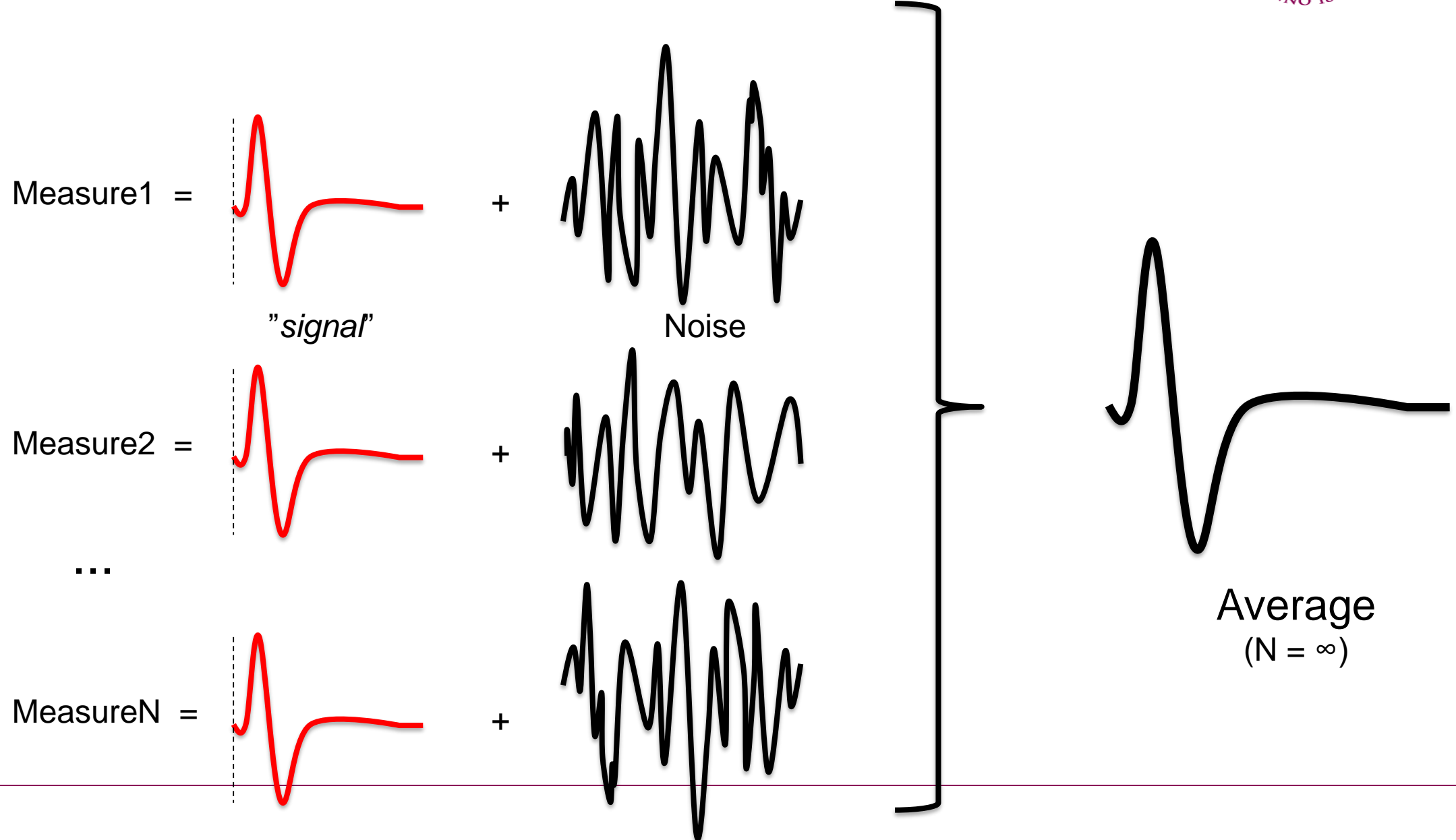
Evoked response



Evoked response



Evoked response



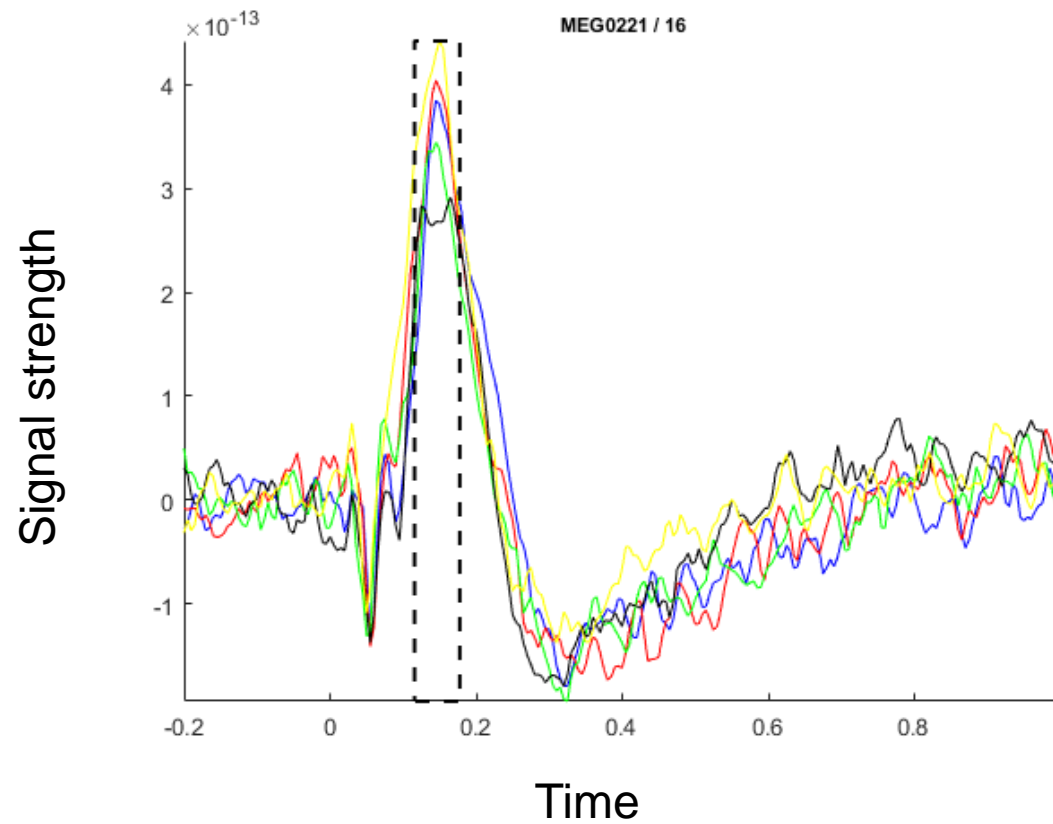


**Karolinska
Institutet**

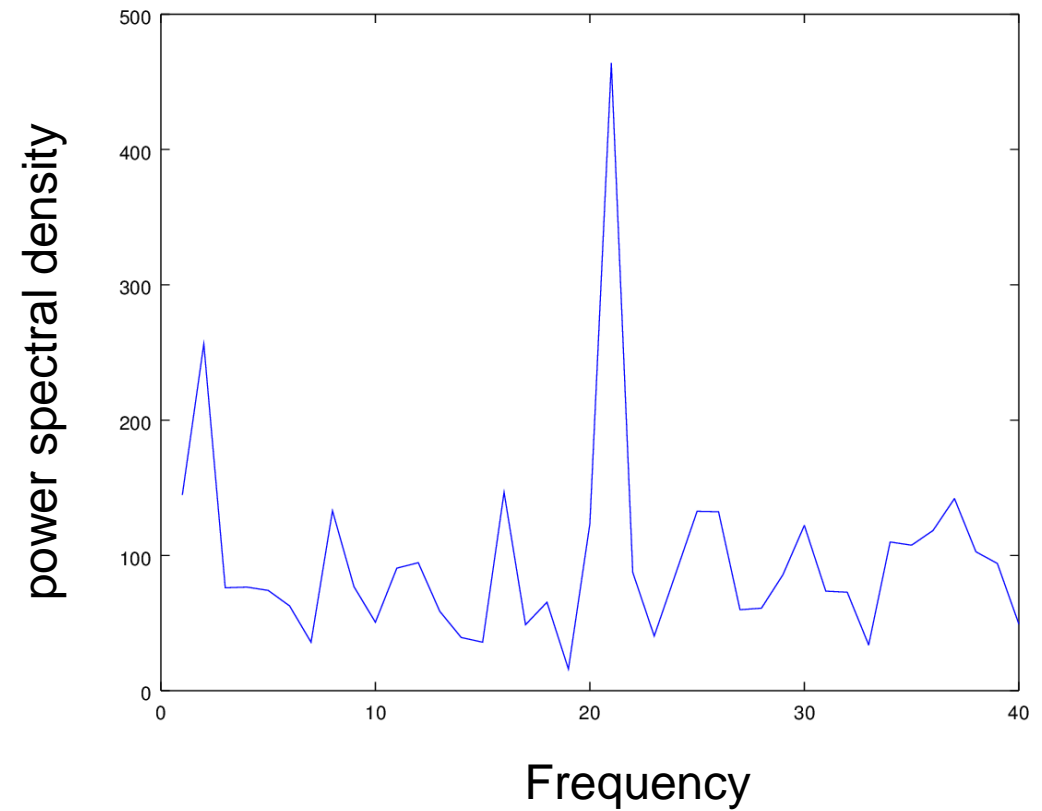
Induced responses

Time-frequency responses

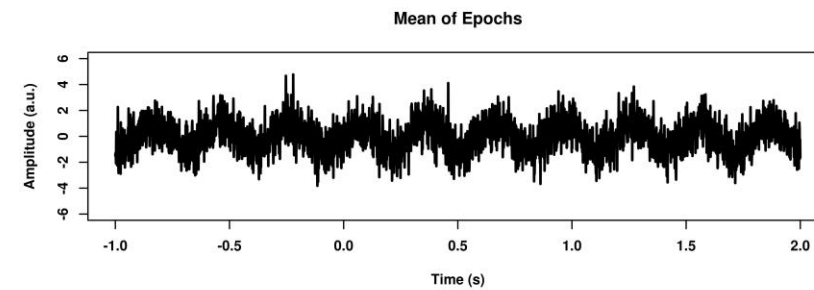
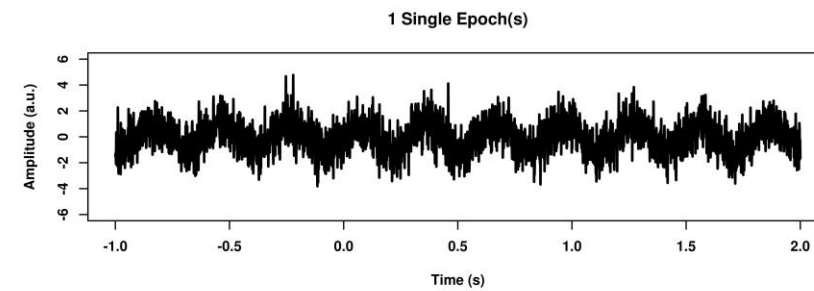
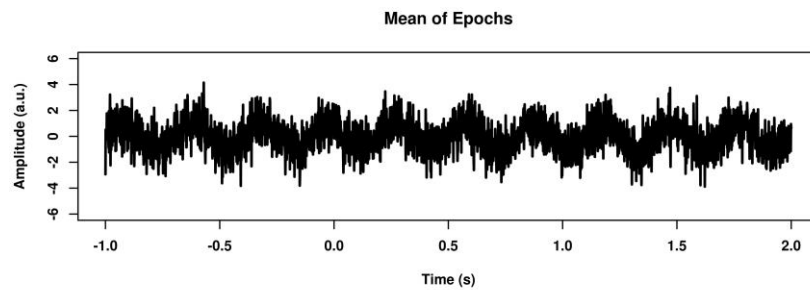
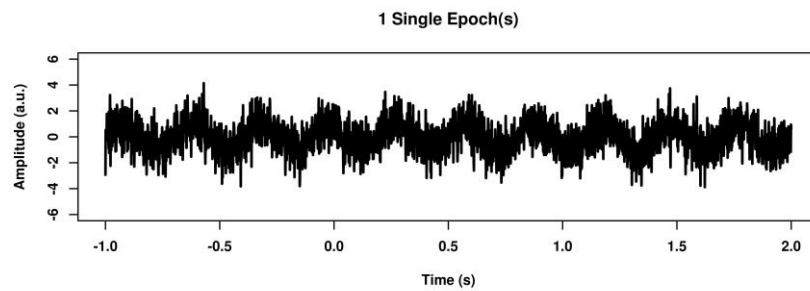
Time domain



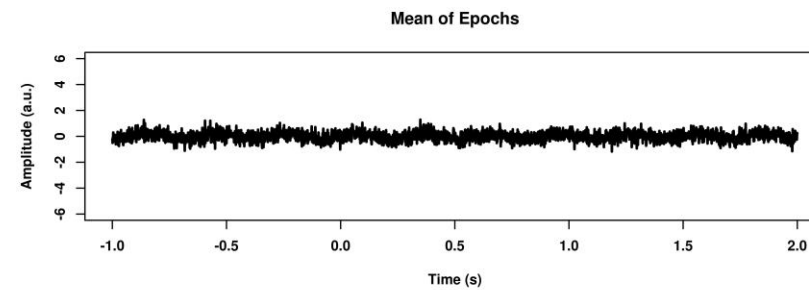
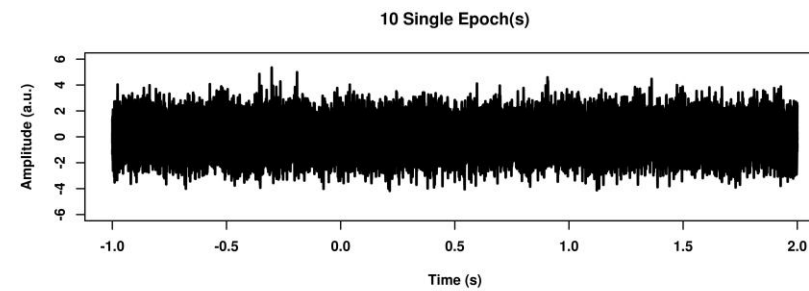
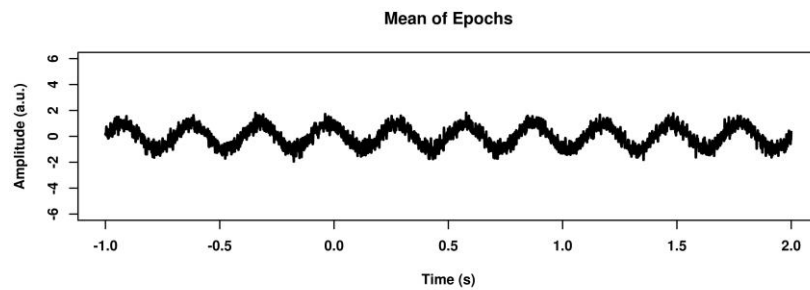
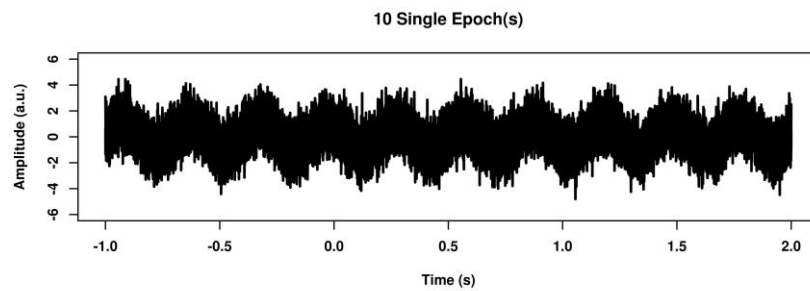
Frequency domain



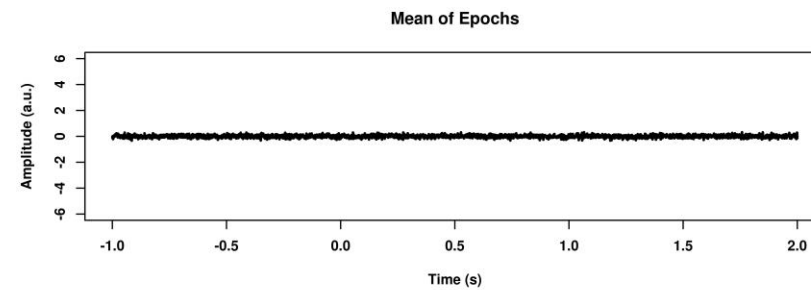
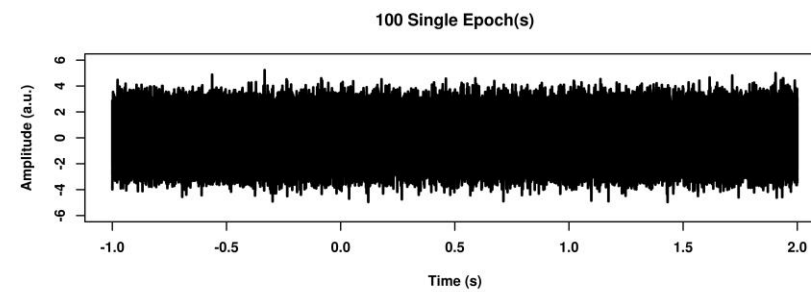
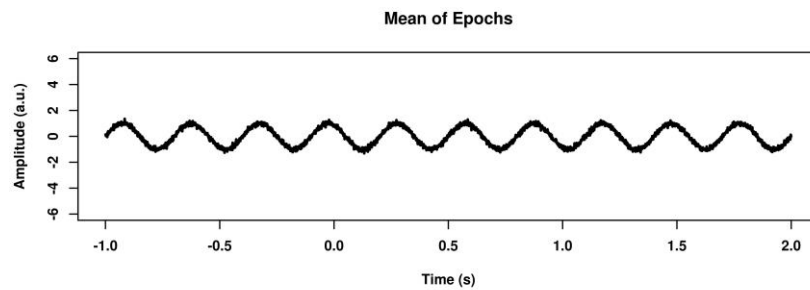
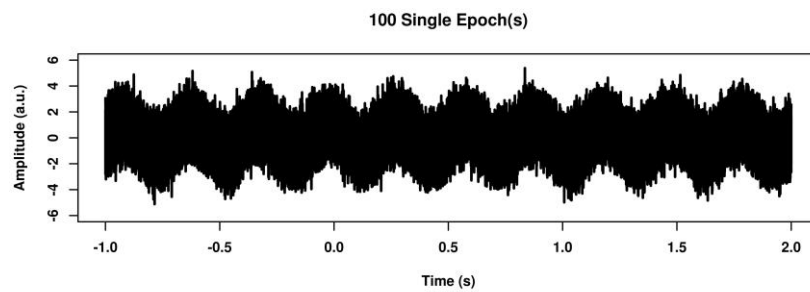
Oscillations: In/Out of phase



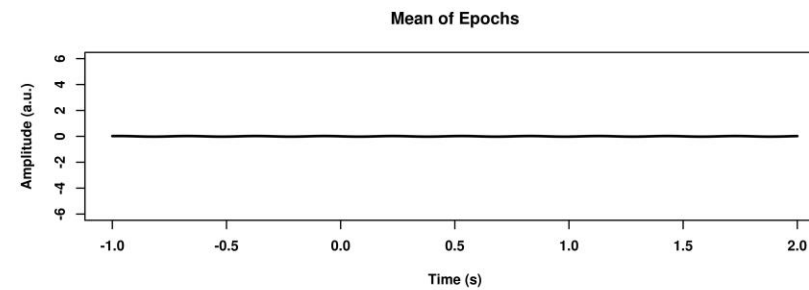
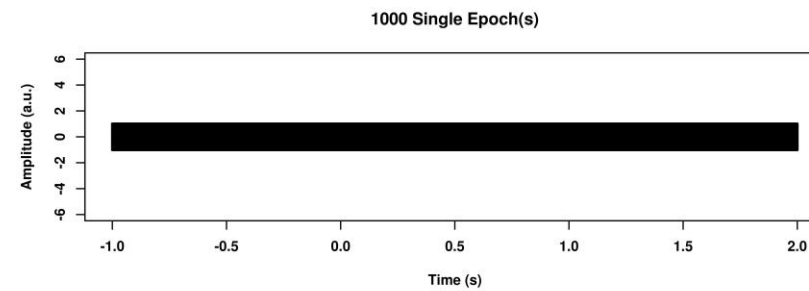
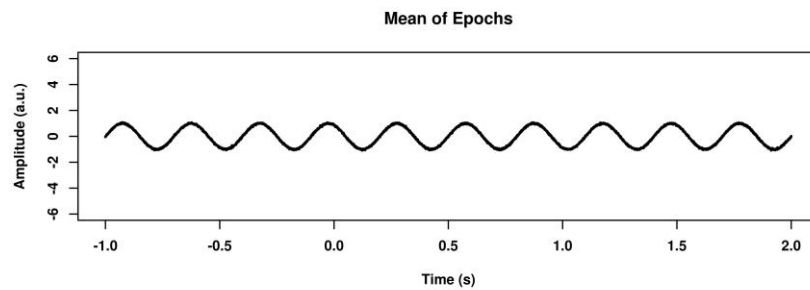
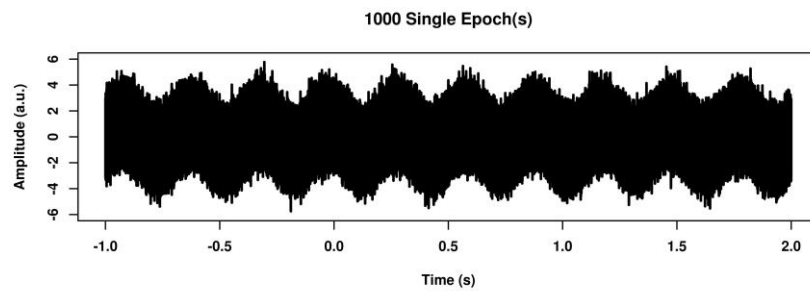
Oscillations: In/Out of phase



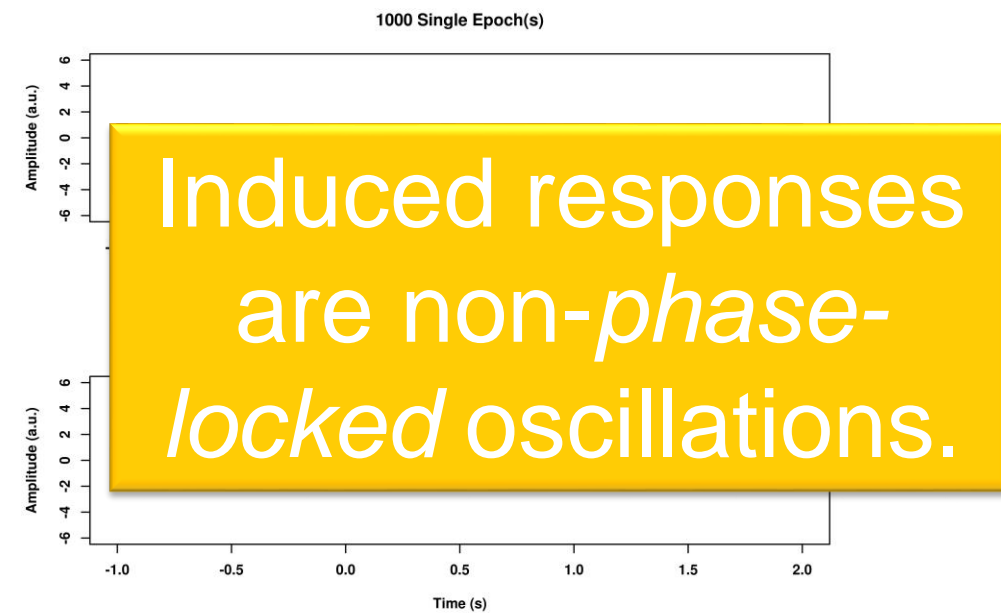
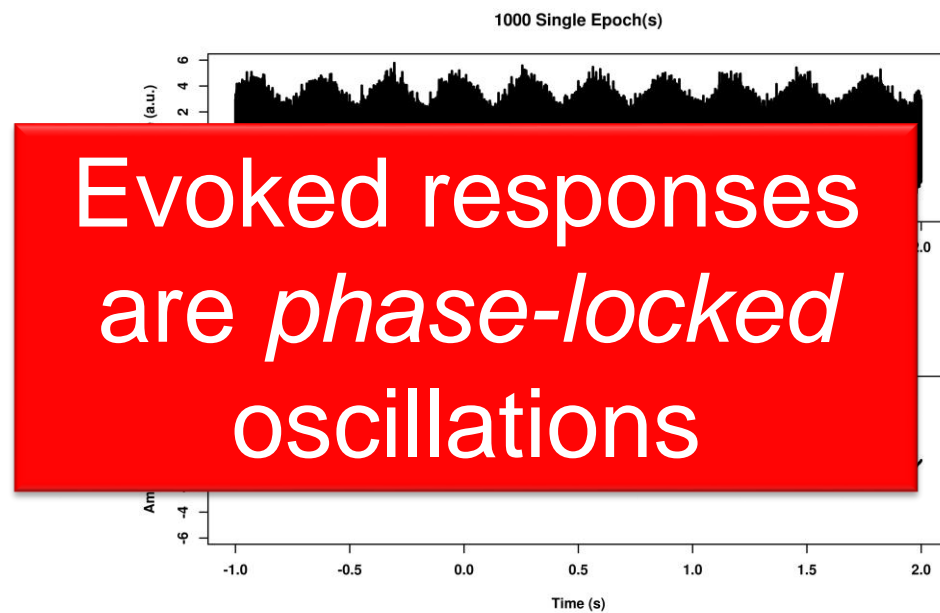
Oscillations: In/Out of phase



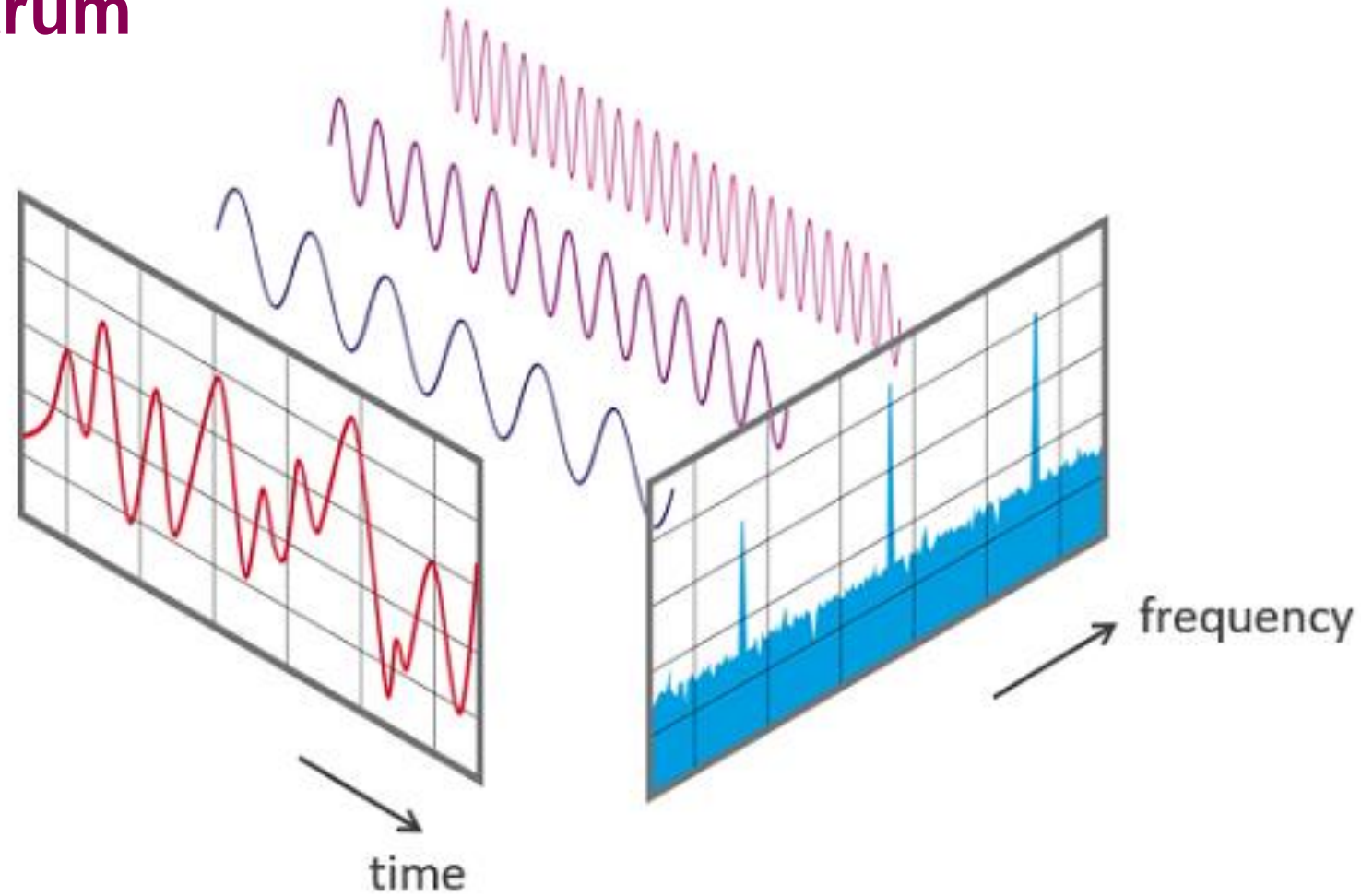
Oscillations: In/Out of phase



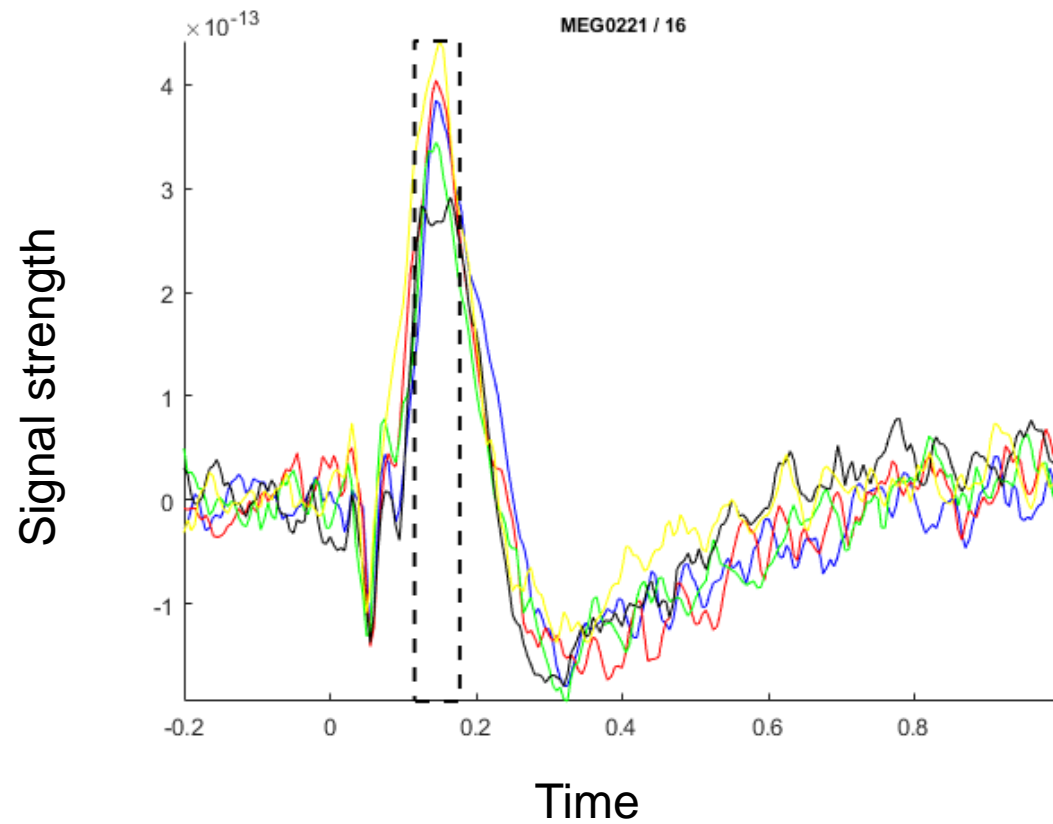
Oscillations: In/Out of phase



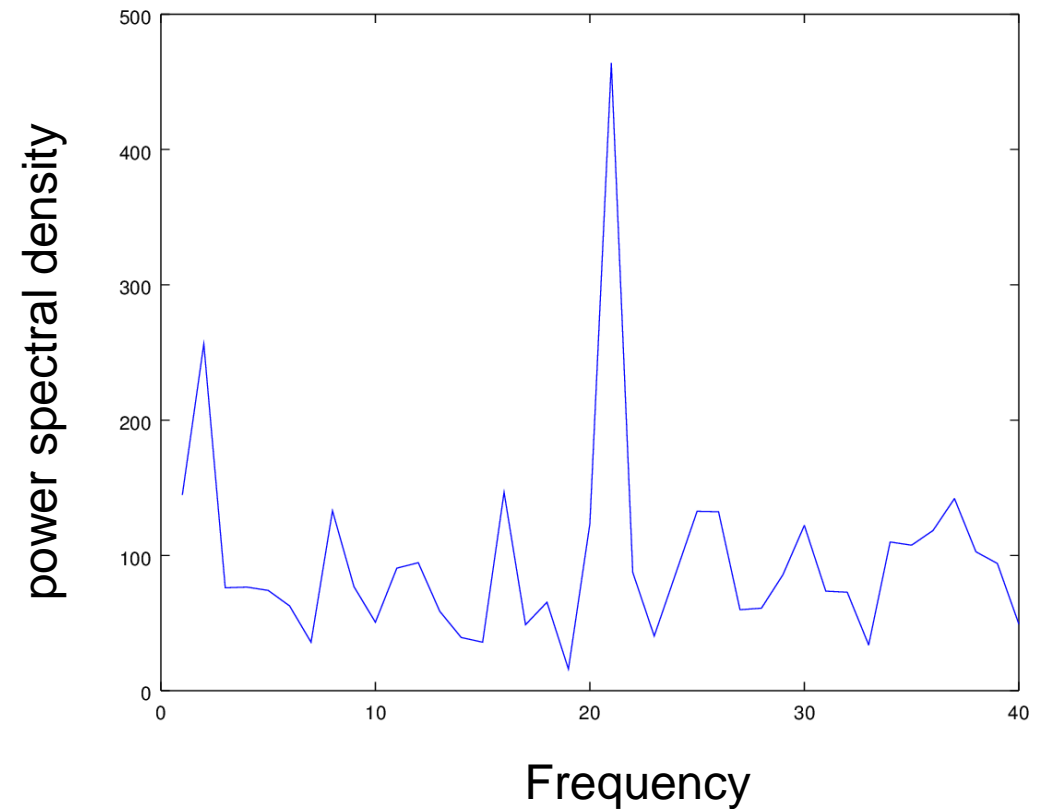
Power spectrum



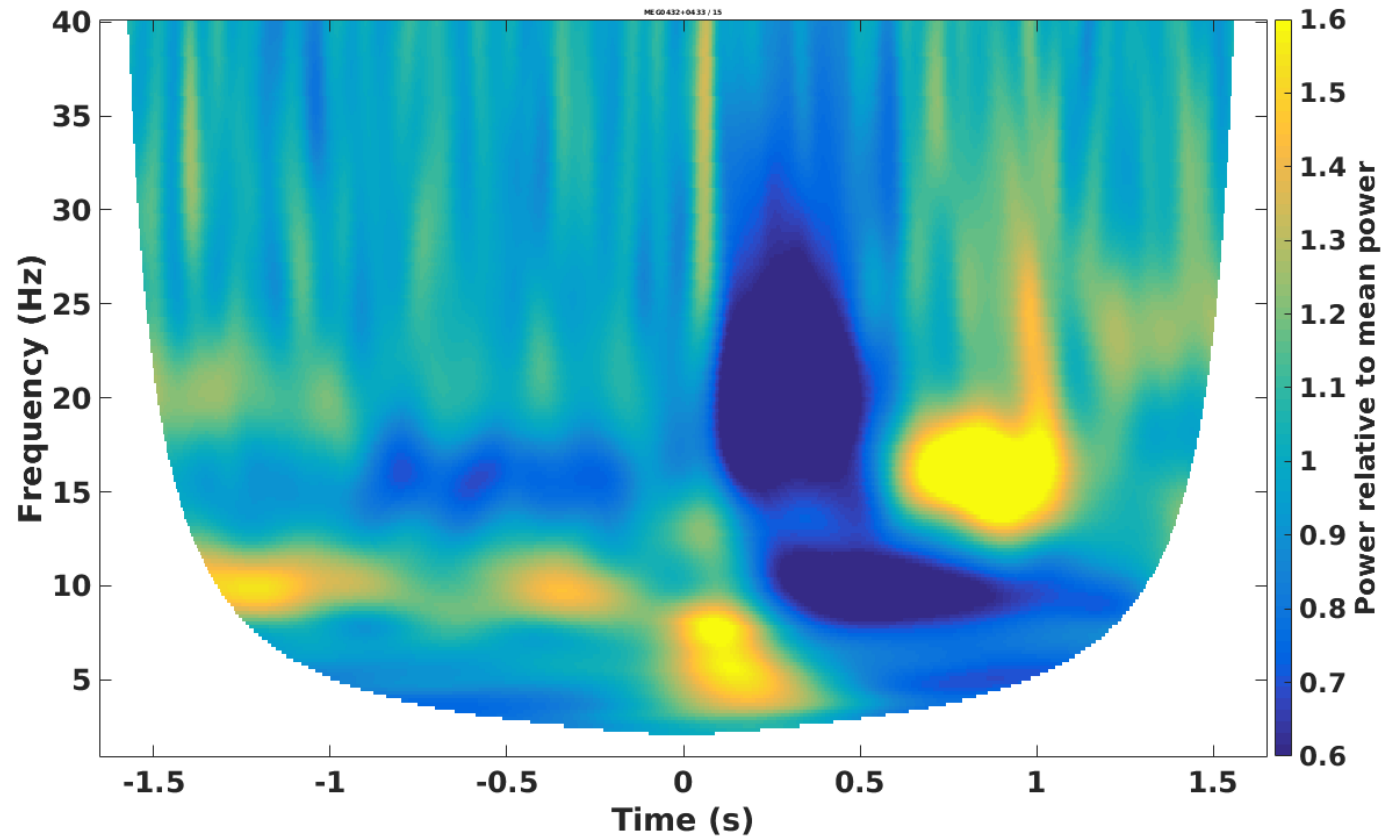
Time domain



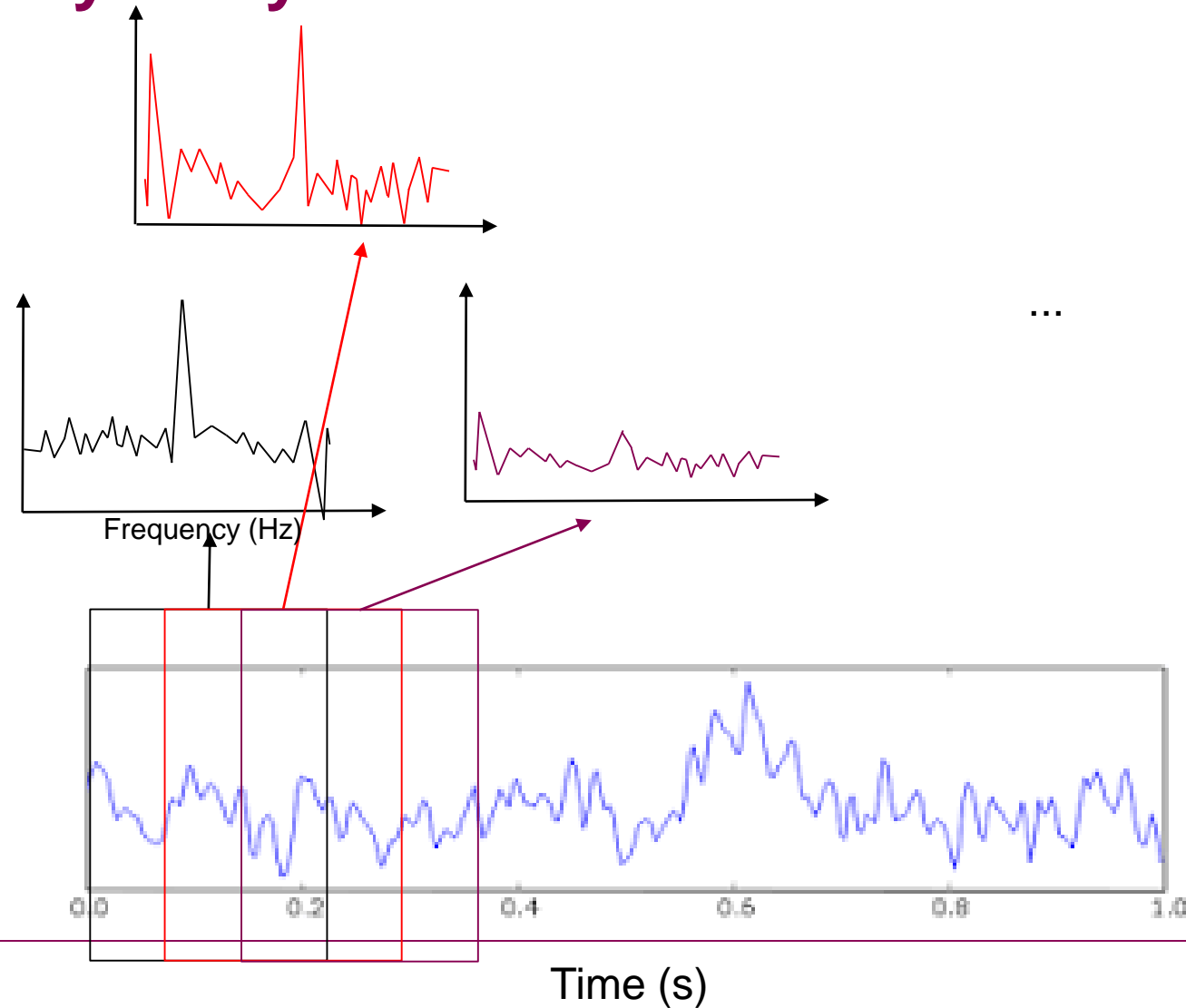
Frequency domain



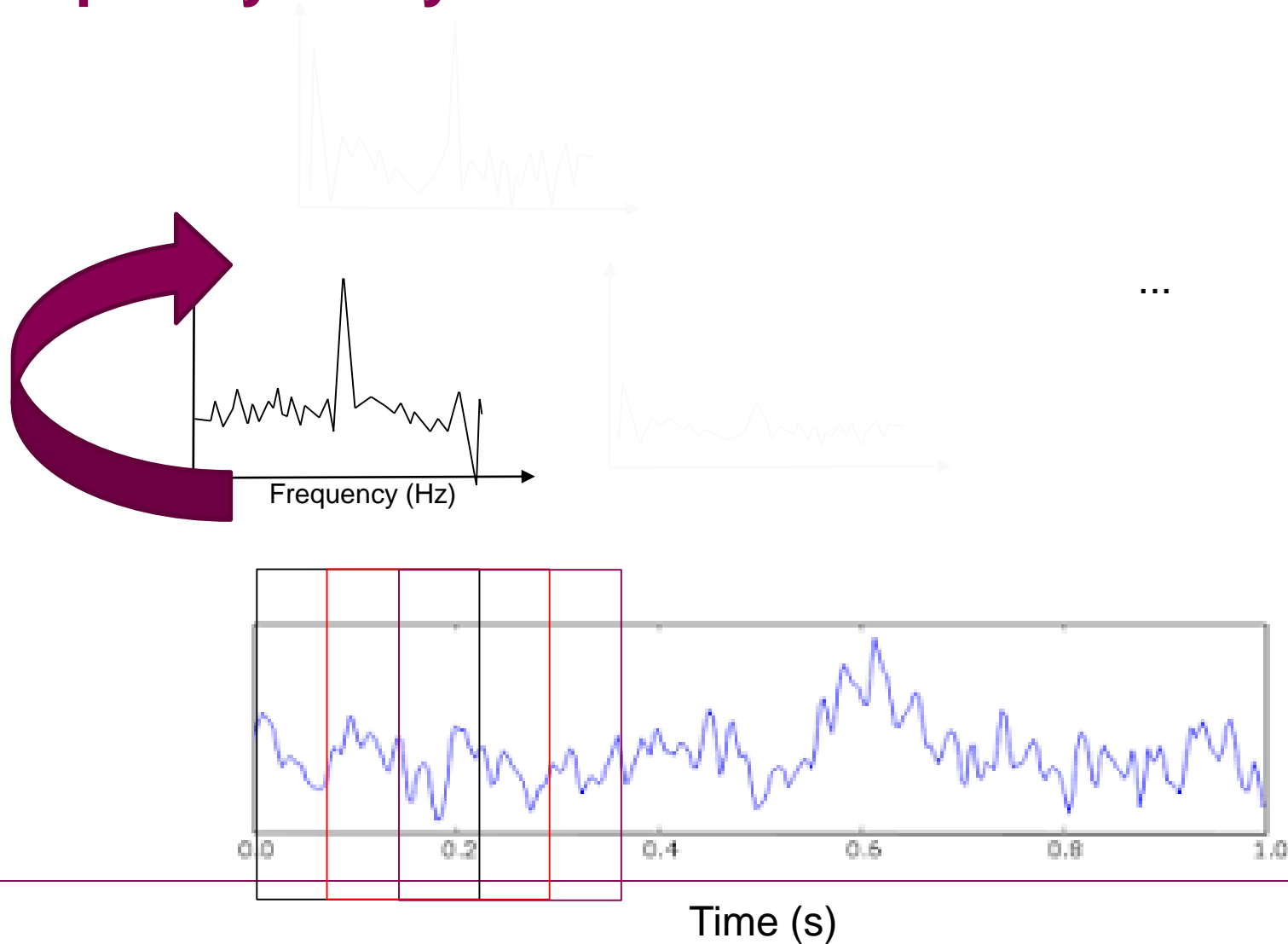
Time-frequency



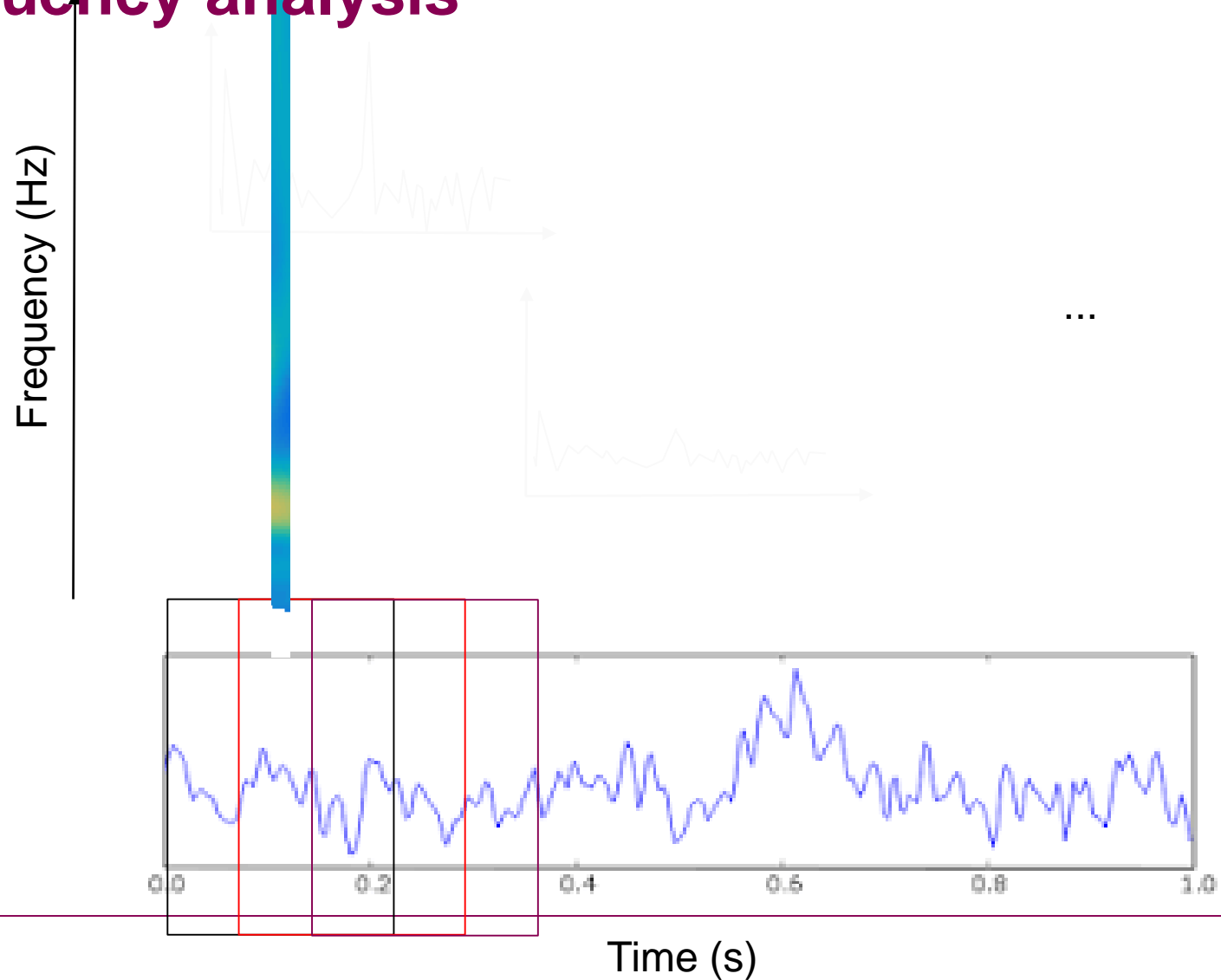
Time-frequency analysis



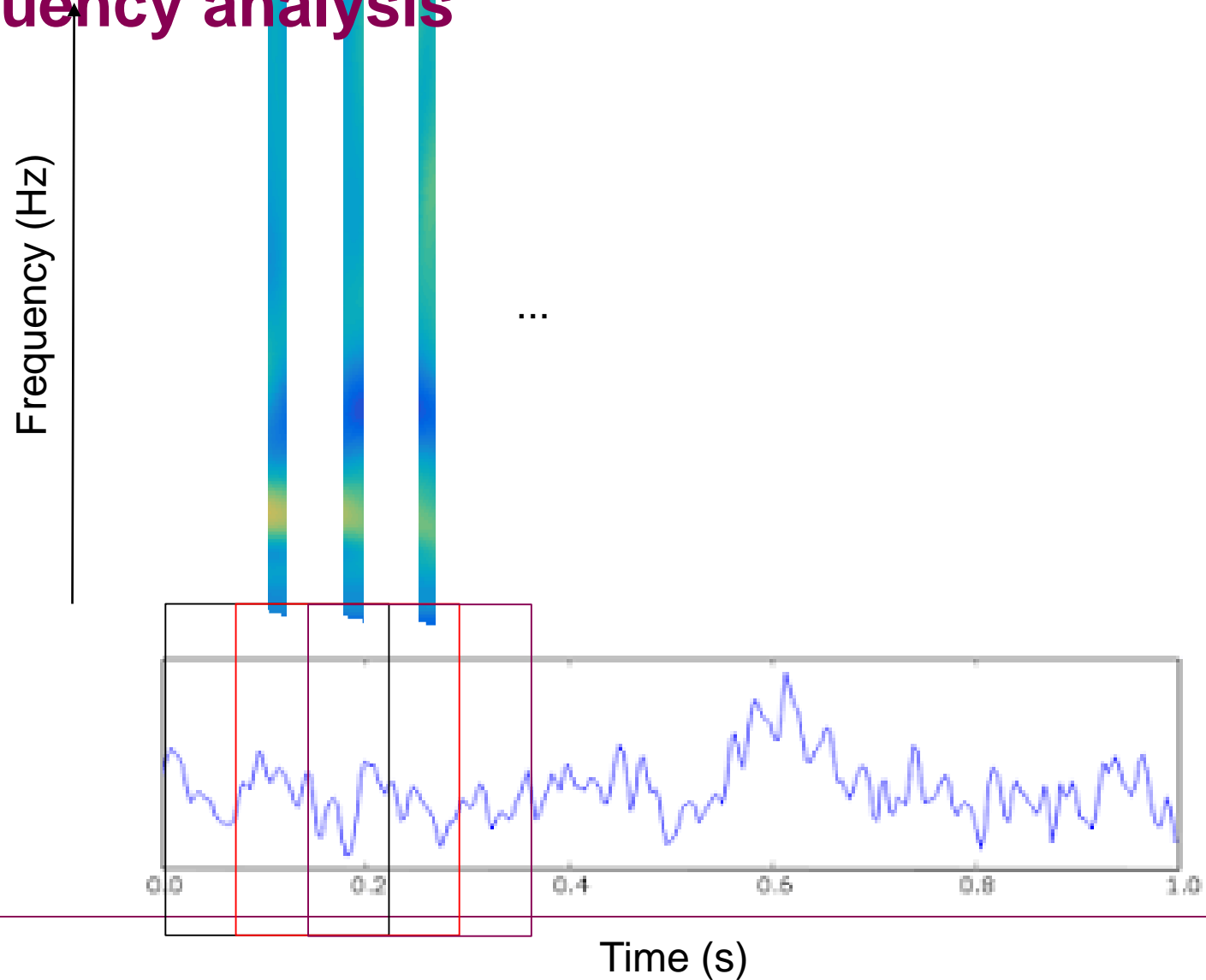
Time-frequency analysis



Time-frequency analysis

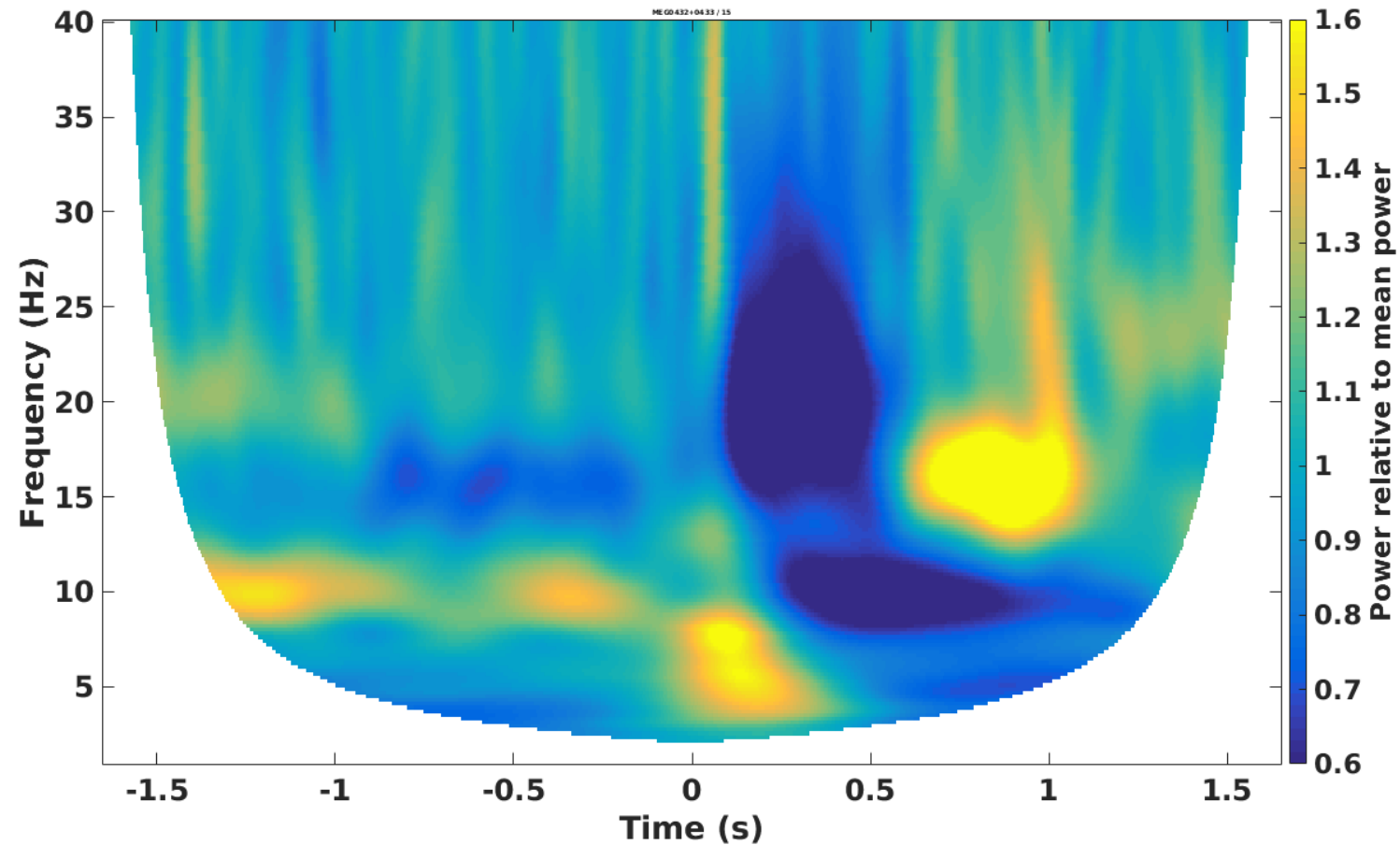


Time-frequency analysis



Time-frequency analysis

Time-frequency representation



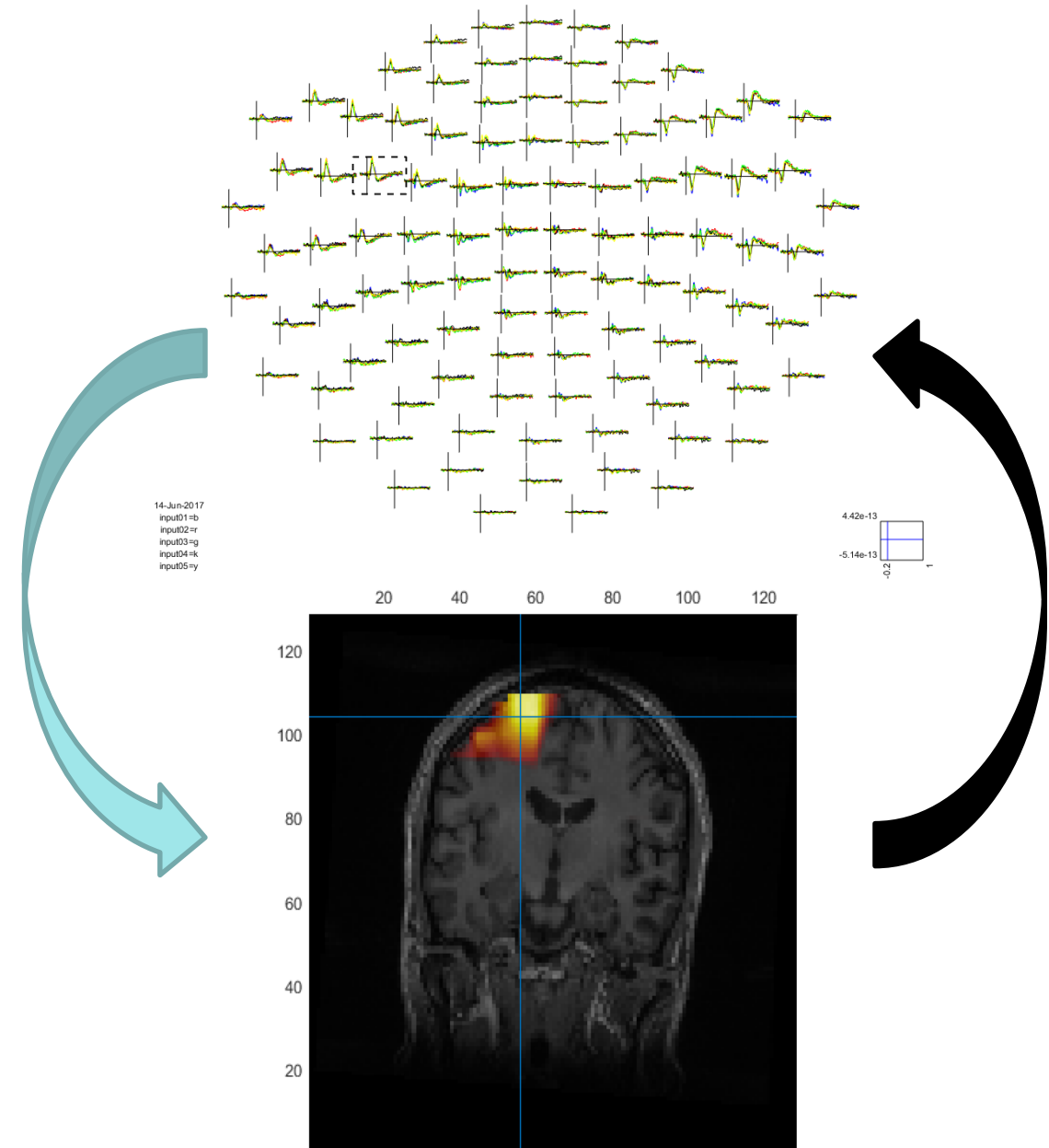


**Karolinska
Institutet**

Source analysis (beamformer)

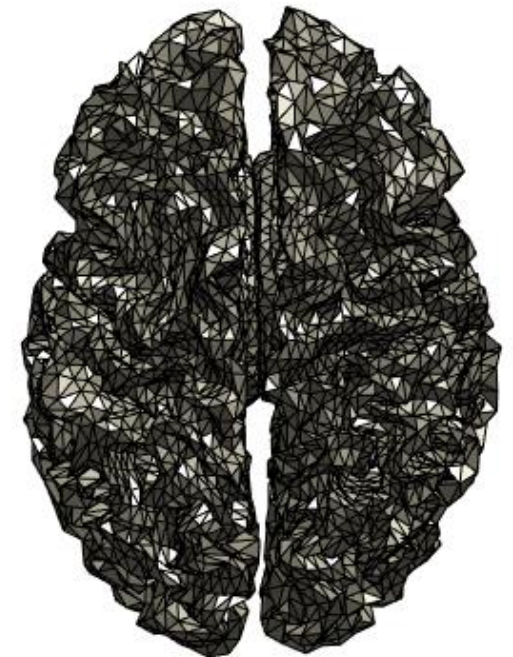
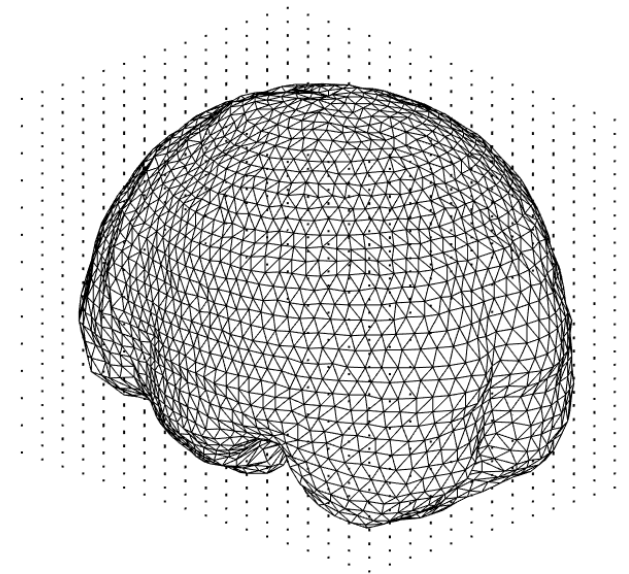
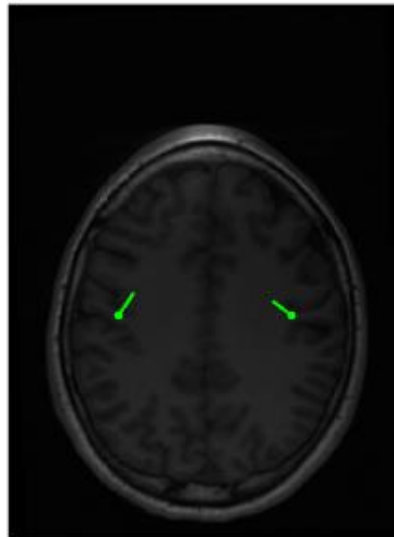
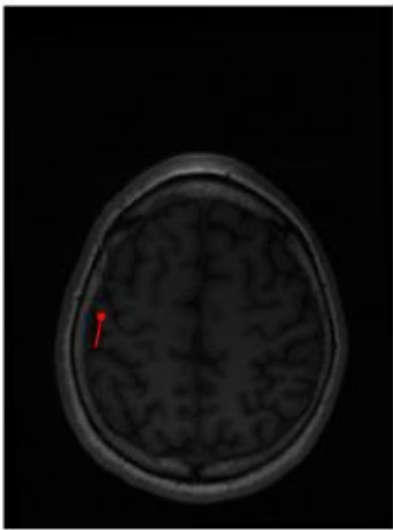
Quick terminology

- **Sensor space**
- **Source space**
- **Source model**
- **Leadfield/Forward model**
- **Head model/volume conductor**

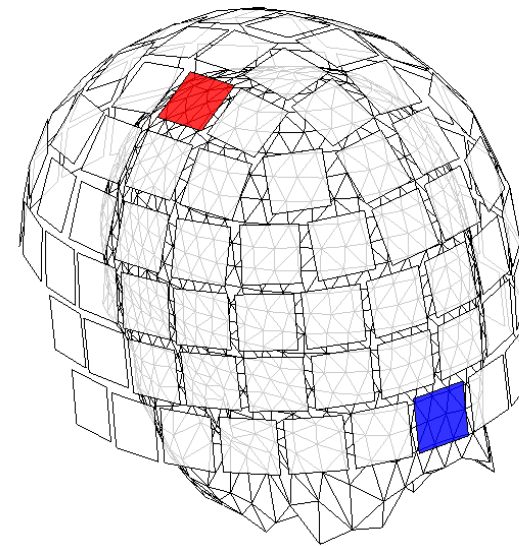
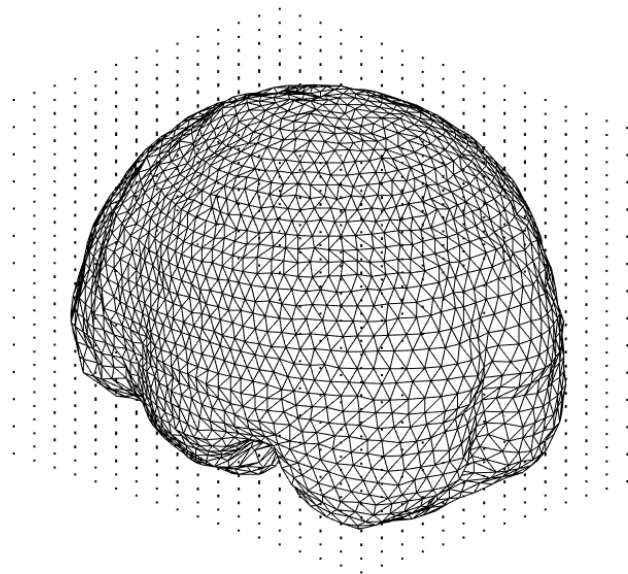


Source models

- A single (or few) point(s)
- Evenly distributed
- Distributed according to anatomy

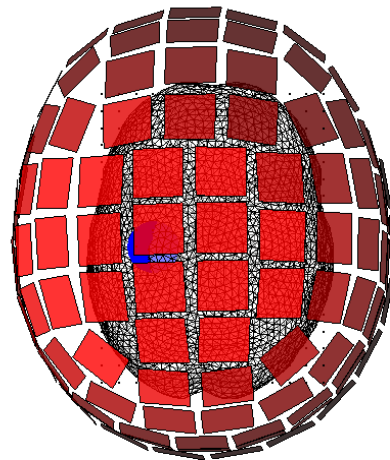


HEAD MODEL: How the electric currents are conducted in the head



LEADFIELD: How a sensor sees a source *if it was active*?

"Tactile source"



"Occipital" source

